

CLIPPER 2023-24 RACE

RACE FINISH AND FLEET ARRIVAL INFORMATION

CLIPPER RACE FINISH AND FLEET ARRIVAL INFORMATION INTO GUNWHARF QUAYS, PORTSMOUTH - SATURDAY 27 JULY 2024

SUMMARY

Gunwharf Quays in Portsmouth will be hosting the fleet of the Clipper Round the World Yacht Race from 27 July until 29 July 2024 for the official Race Finish and homecoming ceremony at the end of the Clipper 2023-24 Race.

At 40,000 nautical miles, the event is the world's longest sailing race and will take the eleven identical 70-foot ocean racing yachts almost a year to complete their circumnavigation of the globe. It's the only race in the world where the organisers supply the fleet of eleven identical, 70-foot, stripped down racing yachts – each sponsored by a destination or corporation – and man them with a fully trained and professional Skipper and Mate on each yacht, employed to lead the crews safely around the world.

Gunwharf Quays and Clipper Ventures are working in partnership to host the arrival and homecoming of this race with the support of Portsmouth City Council. It is intended to be an atmospheric, colourful affair as family and friends, supporters and spectators welcome the teams back to Portsmouth after their 40,000nm race around the world.

There will be a Final Sprint Race for the Clipper Race Fleet that will conclude between 1130 – 1200 LT on a Finish Line outside Portsmouth Harbour, just off Southsea Castle. The first three yachts across the Finish Line will receive 3, 2 and 1 bonus points respectively. This will be the final racing action of the Clipper 2023-24 Race and will determine overall finishing positions of the teams.

The exact location and details of the Final Sprint Race and any race marks are subject to weather conditions at the time and will be determined by the Race Director. All teams will be briefed in advance.

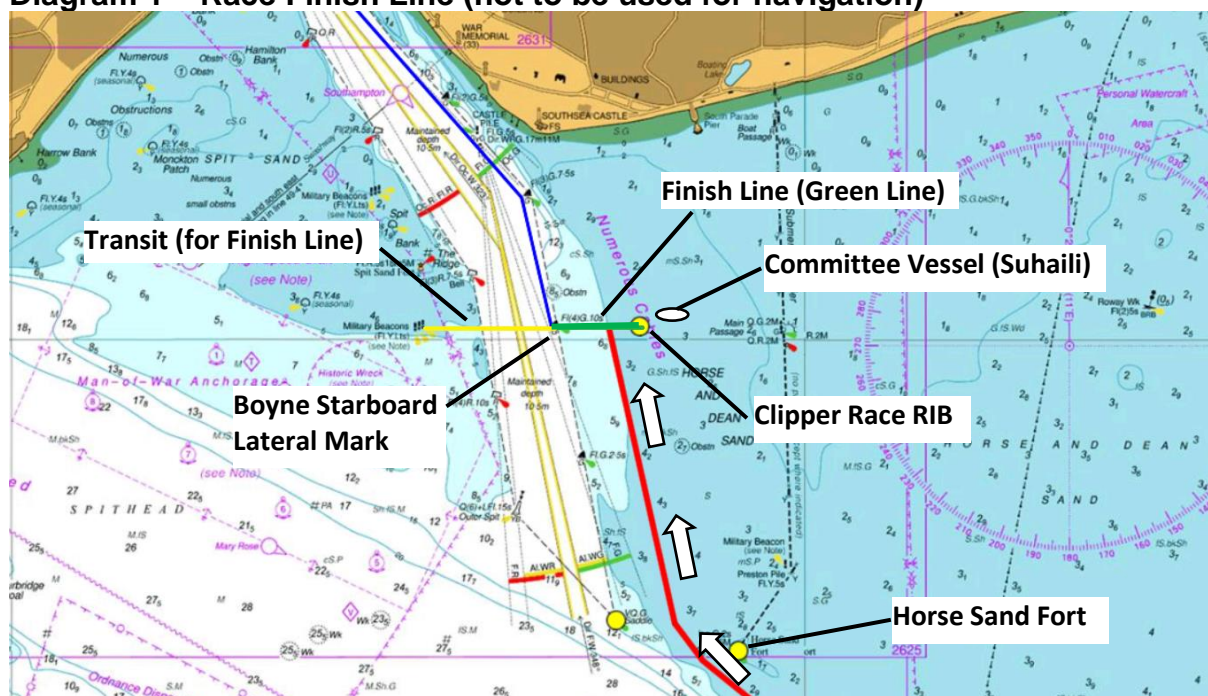
Any alterations to the proposed finish course shall be made on VHF CH 72.

The Clipper Race Committee reserves the right to change or adjust the starting procedures or race course and any aspect of the race course to ensure the overall objectives of the Clipper Race are achieved.

After a Fleet Parade into Portsmouth Harbour, the Clipper Race fleet will finally arrive and berth at Gunwharf Quays Marina on Saturday 27 July 2024 from 1400 LT.

CLIPPER RACE FINISH LINE

Diagram 1 – Race Finish Line (not to be used for navigation)



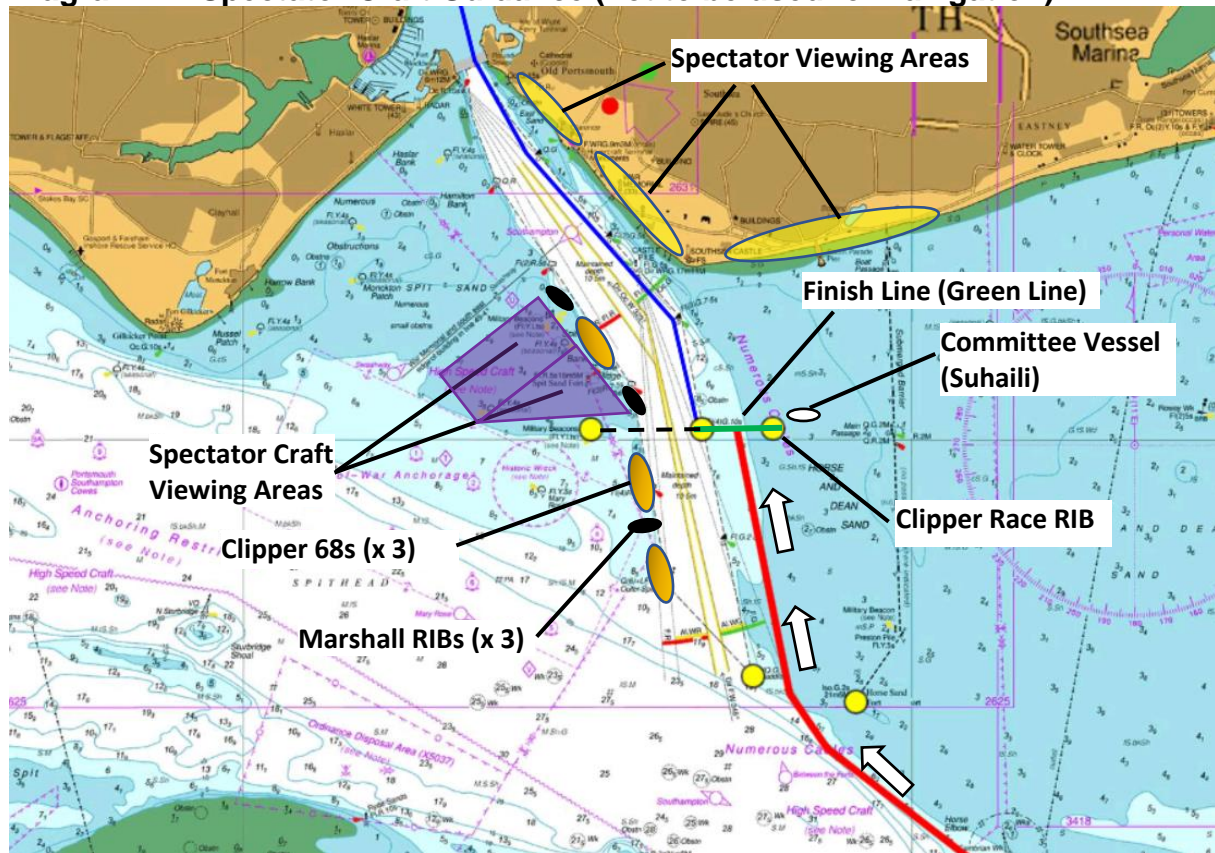
CLIPPER RACE FINISH LINE

- The Finish Line is located outside Portsmouth Harbour in an area approx. 0.65nm due south of Southsea Castle.
- The Finish Line will be an extension (to the east) of a transit between:
 - The easternmost of the three Spit Sand Military Beacons South in position 50°46.040N, 001°05.924W
 - And,
 - Boyne Starboard Lateral Mark in approx. position 50°46.040N, 001°05.259W
- The western end of the Finish Line will be marked by Boyne Starboard Lateral Mark.
- The eastern end of the Finish Line will be marked by the Clipper Race RIB situated approx. 500m to the east of Boyne Starboard Lateral Mark along the transit extension (see Diagram 1 above).
- Each yacht will have deemed to have finished when crossing the Finish Line between Boyne Starboard Lateral Mark and the Clipper Race RIB.
- Suhaili will be the official Committee Vessel in the vicinity of the Finish Line and will give one cannon blast to signal the first yacht across the line. Suhaili will NOT be on the line.
- Any subsequent finishing signals will be made by air horn blast.
- The Finish Line is approx. 500m in length.
- The Finish Line shall be crossed in a South to North direction.

- The estimated finish time for the fleet will be between 1130 – 1200 LT on Saturday 27 July 2024.
- NOTE – ALL Clipper Race yachts shall remain east of the Main Portsmouth Entrance Channel when approaching the Finish Line.

SPECTATOR CRAFT GUIDANCE

Diagram 2 – Spectator Craft Guidance (not to be used for navigation)

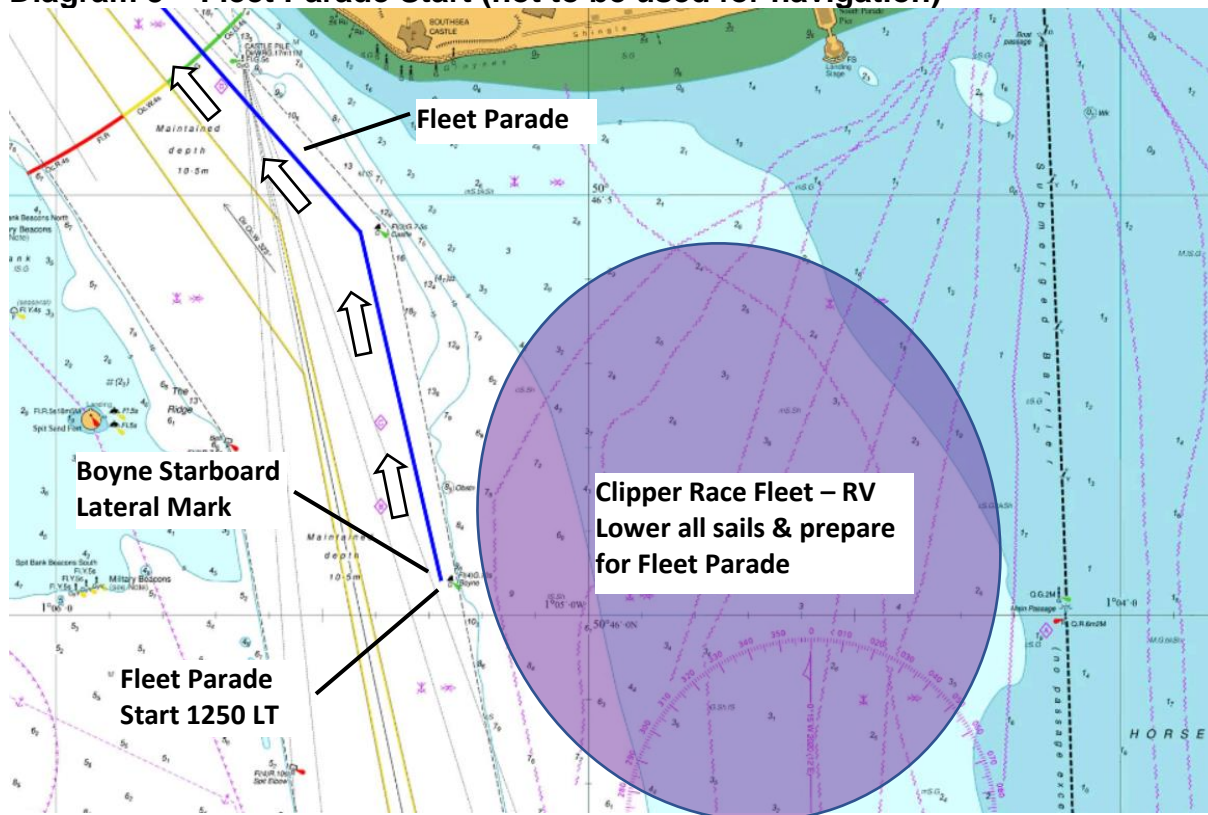


SPECTATOR CRAFT GUIDANCE

- The Spectator Craft Area is in an area near to Spit Sand Fort and bounded by the main channel into Portsmouth Harbour, the Swashway, and an extension of the Finish Line (as shown above).
- ALL spectator craft should remain in the specific Spectator Craft Area (as detailed above) between 1100 and 1300 by which time the Clipper Race Fleet will have finished racing and started the Fleet Parade.
- Spectator Craft **MUST NOT** impede the Clipper Race Fleet when racing and should abide by instructions given by the official Race Marshal vessels.
- Race Marshals will be in attendance to keep spectator craft a safe distance away from the Clipper Race Fleet between 1100 – 1300 LT. All Race Marshal vessels will be identified by an orange marshal flag.
- Clipper Race Officials will be stationed on the water and will control the Finish Line and Clipper Race Fleet. All Clipper Race Officials are made up of experienced round the world yacht Skippers and Crew.
- Spectator Craft **MUST NOT** impede the Clipper Race Fleet during the Fleet Parade and should abide by instructions given by the official Race Marshal vessels.
- The finish course is subject to weather conditions on the day. The exact location of the finish course and any marks will be determined by the Race Director in the interests of general safety and in the best interests of the Clipper Race.
- The Clipper Race Committee reserves the right to change or adjust the finish course and any aspect of the race course to ensure the overall objectives of the Clipper Race are achieved.

CLIPPER RACE FLEET PARADE

Diagram 3 – Fleet Parade Start (not to be used for navigation)

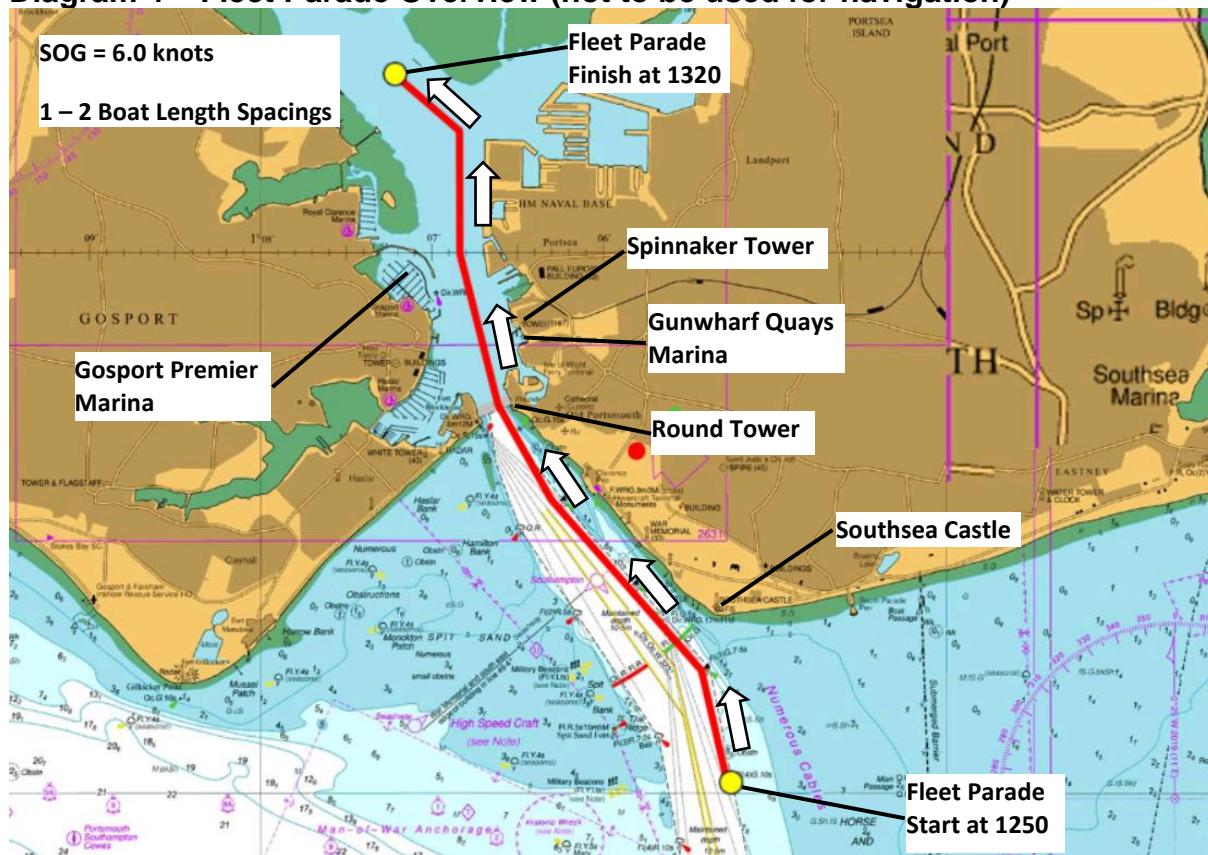


CLIPPER RACE FLEET PARADE

- The Clipper Race Fleet will complete a spectacular parade into Portsmouth Harbour past Gunwharf Quays and the Spinnaker Tower.
- The Fleet Parade will start at Boyne Starboard Lateral Mark at 1250 LT.
- The Clipper Race Fleet will be in a line astern formation with a two-boat length spacing between each yacht.
- The speed of the Fleet Parade will be approx. 6.0 knots.
- The Clipper Race Fleet will follow a cross-channel ferry and two Portsmouth International Port tugboats spraying water fountains.
- The distance of the Fleet Parade will be approx. 3.0nm and will take approx. 30 mins to complete.
- The Fleet Parade will finish at the Upper Harbour Ammunitioning Facility (UHAF) at approx. 1320 LT.
- The cross-channel ferry and tugboats will head east to Portsmouth International Port.

CLIPPER RACE FLEET PARADE

Diagram 4 – Fleet Parade Overview (not to be used for navigation)

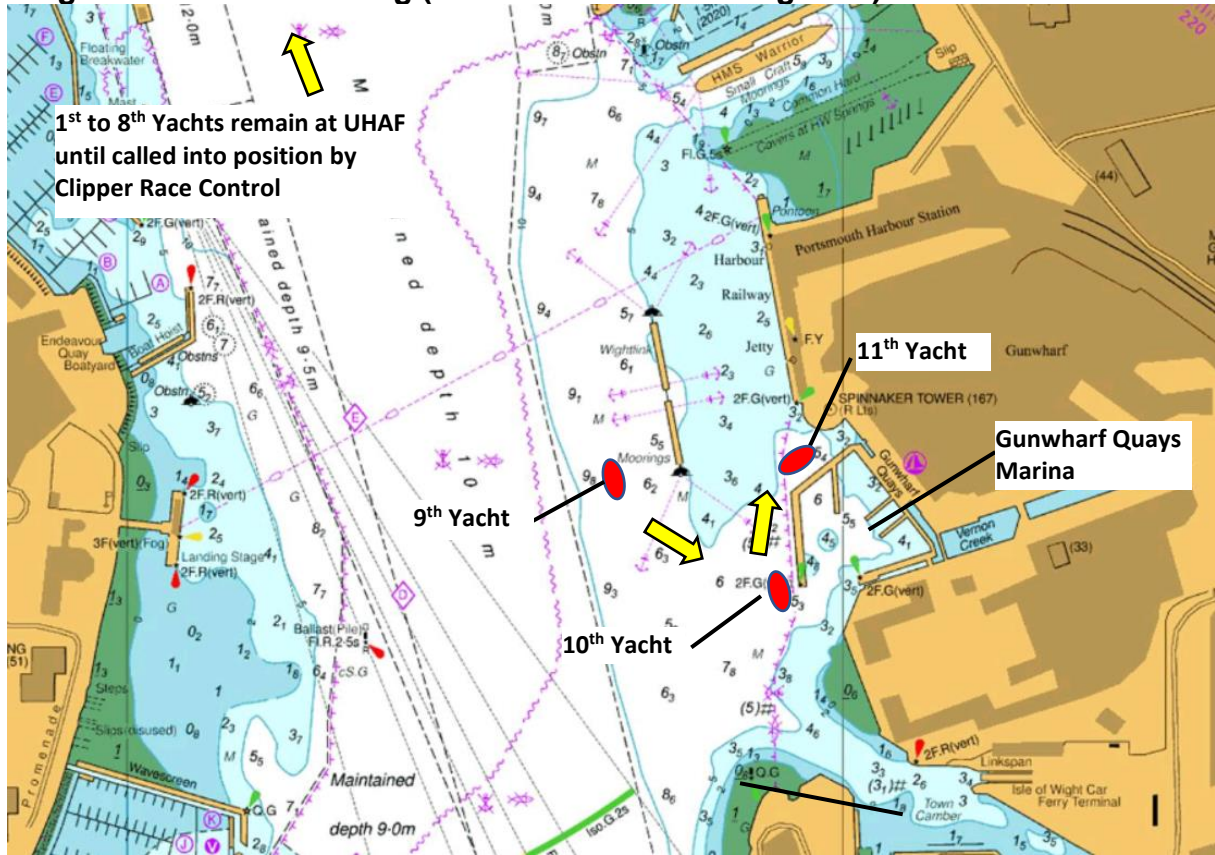


CLIPPER RACE FLEET PARADE

- The Clipper Race Fleet will complete a spectacular parade into Portsmouth Harbour past Gunwharf Quays and the Spinnaker Tower.
- The timings for the Clipper Race Fleet Parade are as follows:
 - 1250 Fleet Parade start at Boyne Starboard Lateral Mark
 - 1254 Fleet passes Southsea Castle
 - 1305 Fleet passes Round Tower
 - 1307 Fleet passes Spinnaker Tower and Gunwharf Quays Marina
 - 1320 Fleet Parade finish at Upper Harbour Ammunitioning Facility (UHAF)
- Spectator Craft **MUST NOT** impede the Clipper Race Fleet during the Fleet Parade and should abide by instructions given by the official Race Marshal vessels.
- The Clipper Race fleet will keep a listening watch with KHM on VHF Ch 11 at all times, as well as VHF Ch 16. All Clipper Race Management communications will be made on VHF Ch 72.

CLIPPER RACE FLEET BERTHING

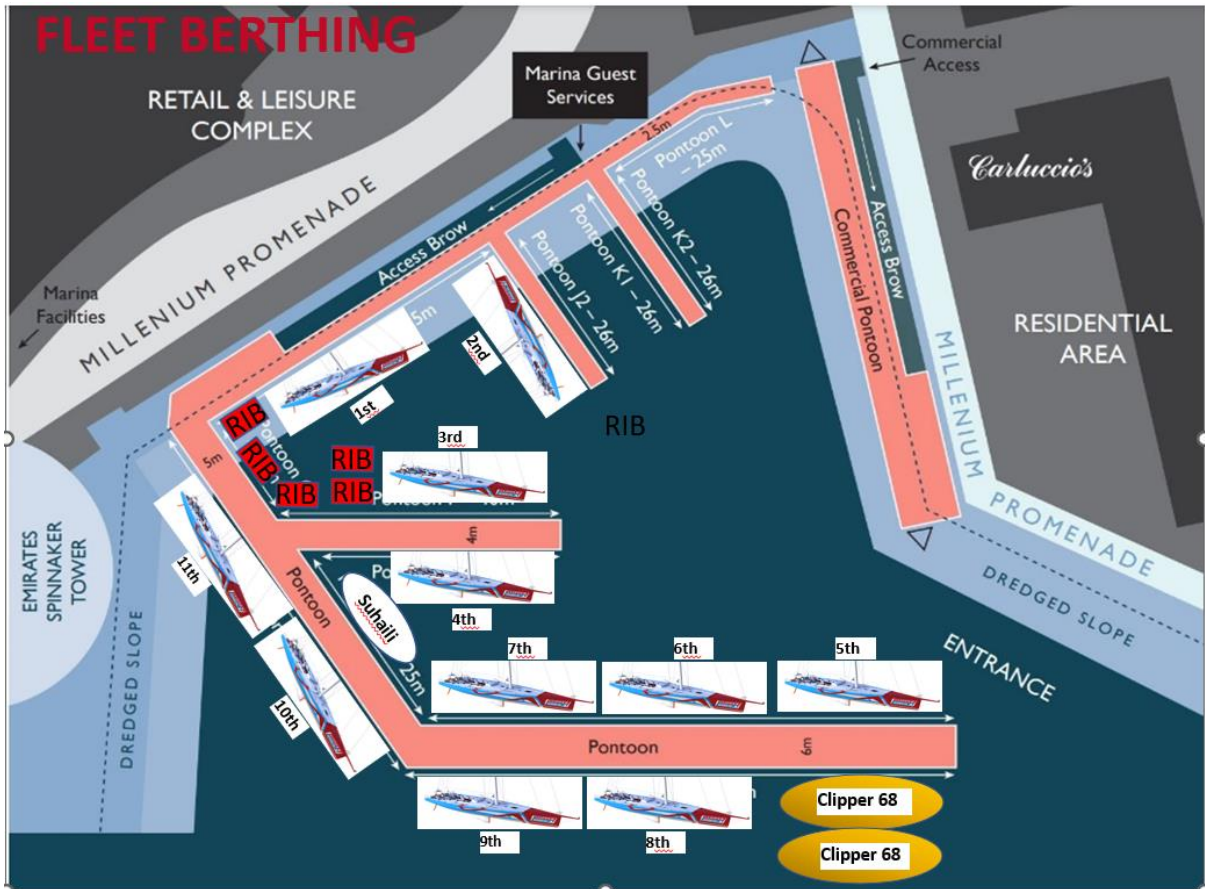
Diagram 5 – Fleet Berthing (not to be used for navigation)



CLIPPER RACE FLEET BERTHING

- The Clipper Race Fleet will berth in Gunwharf Quays Marina in reverse finishing order (11th place first to berth and 1st place last to berth)
- Berthing will commence at 1400 LT.
- Yacht movements as follows:
 - At 1400 LT the 11th Yacht will be berthing in Gunwharf Quays Marina
 - 10th Yacht will hold outside Gunwharf Quays Marina
 - 9th Yacht will hold outside the Wightlink mooring pontoons
- Every 5 minutes Clipper Race Yachts will cycle into the new positions as follows:
 - At 1405 LT the 10th Yacht will be berthing in Gunwharf Quays Marina
 - 9th Yacht will hold outside Gunwharf Quays Marina
 - 8th Yacht will hold outside the Wightlink mooring pontoons
- This cycle of yacht movements will continue every 5 minutes until the Clipper Race Fleet are safely berthed in Gunwharf Quays Marina.

CLIPPER RACE FLEET BERTHING



CLIPPER RACE FLEET BERTHING

- Clipper Race Yachts will berth in Gunwharf Quays Marina at 5-minute intervals as follows:
 - 1400 11th place
 - 1405 10th place
 - 1410 9th place
 - 1415 8th place
 - 1420 7th place
 - 1425 6th place
 - 1430 5th place
 - 1435 4th place
 - 1440 3rd place
 - 1445 2nd place
 - 1450 1st place (Clipper 2023-24 Race - Overall Winners)
- Once all teams are safely berthed at Gunwharf Quays Marina the official prizegiving and team presentations will take place on stage.
- The Clipper Race Fleet will depart Gunwharf Quays Marina at approx. 1100 LT on Monday 29 July 2024.

Heavy Weather Plan:

In the event of heavy weather, it is highly likely that the Final Sprint Race that finishes outside Portsmouth Harbour, will not take place. This decision will be made by the Clipper Race Director in conjunction with KHM. In this case, the Clipper Race Fleet will gather outside Portsmouth Harbour and complete the Fleet Parade (under engine) into the harbour and berth in Gunwharf Quays, as planned.

Abandonment Plan:

If for any reason (eg, adverse weather or shoreside security issue) the Race Finish or Fleet arrival ceremony needs to be abandoned then the Clipper Race fleet shall RV outside Portsmouth Harbour in line astern formation as directed by the Clipper Race Director. If an individual yacht has cause to abandon due to engine failure, collision, grounding, fire or crew injury then the rest of the fleet shall proceed as planned. The decision to abandon the event shall be made and communicated by the Clipper Race Director in consultation with KHM.

Event	Clipper 2023-24 Race Finish & Arrival
Organising Authority	Clipper Ventures Plc
Race Director	Mark Light
Operating area	Portsmouth Harbour and Eastern Solent
VHF channels	72 (back up channel 77)
Callsign	'Clipper Race Control'
Contact Race Director	07875 206337
Supporting documents	Clipper Race Departure Schedule
Date of event	Saturday 27 July 2024
Operating period	0900 to 1500 approx.
Website	www.clipperroundtheworld.com
Number of boats	11
Authorities informed by email	KHM, Southampton VTS, Cowes Harbour Commission, Solent Coastguard, RNLI, GAFIRS

Mark Light
Clipper Race Director

23 July 2024

CLIPPER RACE FINISH AND ARRIVAL SCHEDULE

PORTSMOUTH RACE FINISH AND FLEET ARRIVAL

SCHEDULE V1.0 [All times local]

TIME	ACTIVITY AND TIMINGS	LOCATION	STAFF	NOTES AND DETAILS
SATURDAY 27 JULY 2024 [RACE FINISH / ARRIVAL DAY] HW 1713 BST 4.60m				
1000 tbc	Clipper Race Final Sprint Start in vicinity of Bembridge Ledge East Cardinal Mark	Eastern Approaches	All Crew	In vicinity of Nab Channel
1130 - 1200	Clipper Race Fleet Finish	Solent	All Crew	Off Southsea Castle
1200 - 1245	Clipper Race Fleet RV and lower mainsails / Prepare for Fleet Parade	Solent	All Crew	Off Southsea Castle
1250	Clipper Race Fleet Parade starts at Boyne Starboard Lateral Mark	Portsmouth Harbour	All Crew	VHF Ch 72 / SOG 6.0 knots / Under Engine
1254	Clipper Race Fleet passes Southsea Castle	Portsmouth Harbour	All Crew	Via Main Channel
1305	Clipper Race Fleet passes Round Tower	Portsmouth Harbour	All Crew	Via Main Channel
1307	Clipper Race Fleet passes Spinnaker Tower and Gunwharf Quays Marina	Portsmouth Harbour	All Crew	Via Main Channel
1320	Clipper Race Fleet arrives in vicinity of UHAF / Fleet Parade finishes	Portsmouth Harbour	All Crew	Via Main Channel
1320 - 1355	Clipper Race Fleet holding station in formation	Portsmouth Harbour	All Crew	In vicinity of UHAF
1400 - 1450	Clipper Race Fleet Berthing in Gunwharf Quays	GWQ	All Crew	Yachts to berth at 5-minute intervals. 1400 (11 th Yacht) and 1450 (1 st Yacht)
1515 - 1630	Welcome and Prizegiving ceremony	GWQ	All Crew	